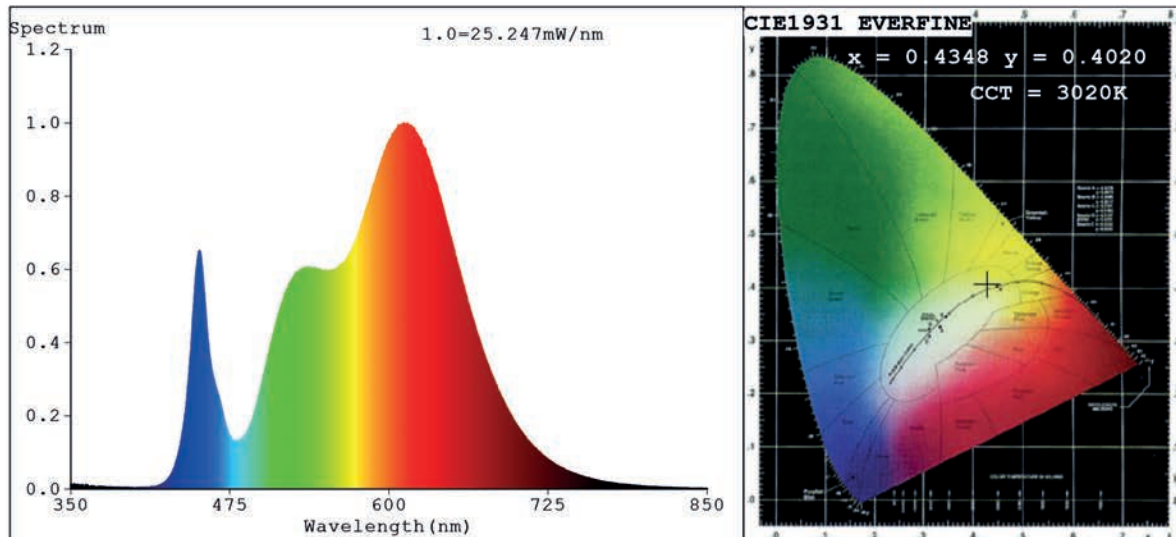


Spectrum Test Report



Color Parameters:

Chromaticity Coordinate: $x=0.4348$ $y=0.4020$ $u'=0.2501$ $v'=0.5202$
 CCT=3020K(Duv=-0.0005) Dominant WL:Ld =582.9nm Purity=51.2%
 Ratio:R=24.4% G=73.4% B=2.2%; Peak WL:Lp=611.5nm FWHM=148.3nm
 Render Index:Ra=90.8 CRI=86.6 TM30:Rf=88 Rg=101
 R1 =93 R2 =94 R3 =95 R4 =93 R5 =92 R6 =94 R7 =90
 R8 =76 R9 =43 R10=85 R11=94 R12=75 R13=93 R14=96 R15=86

Photo Parameters:

Flux = 1208 lm Eff. : 108.06 lm/W Fe = 3.844 W

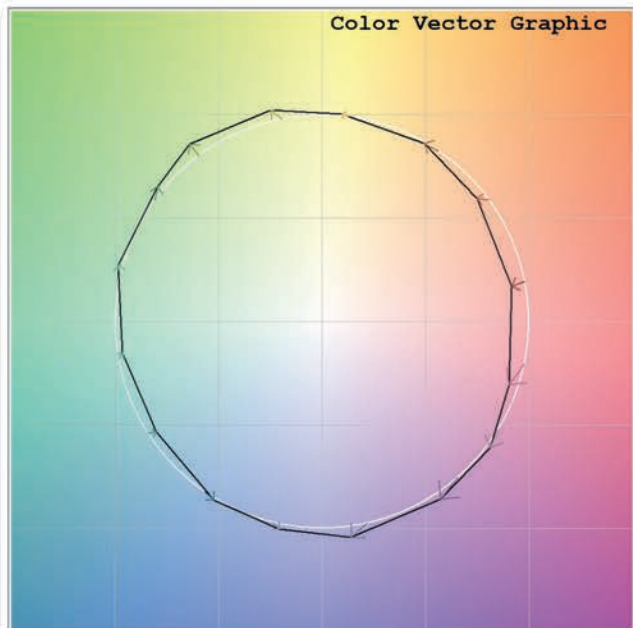
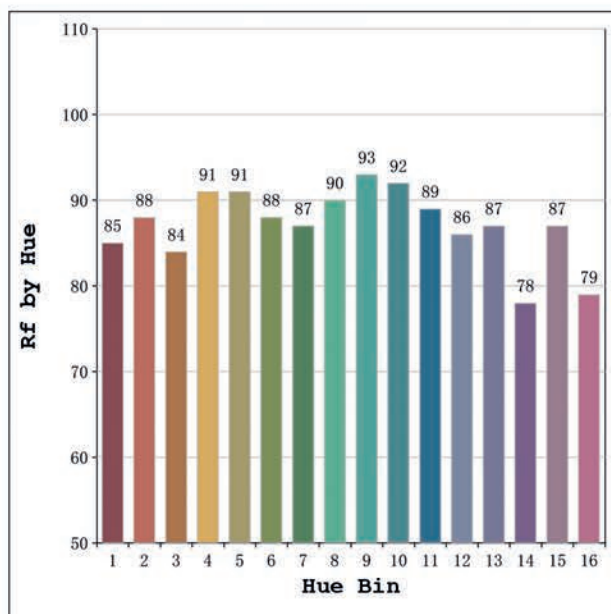
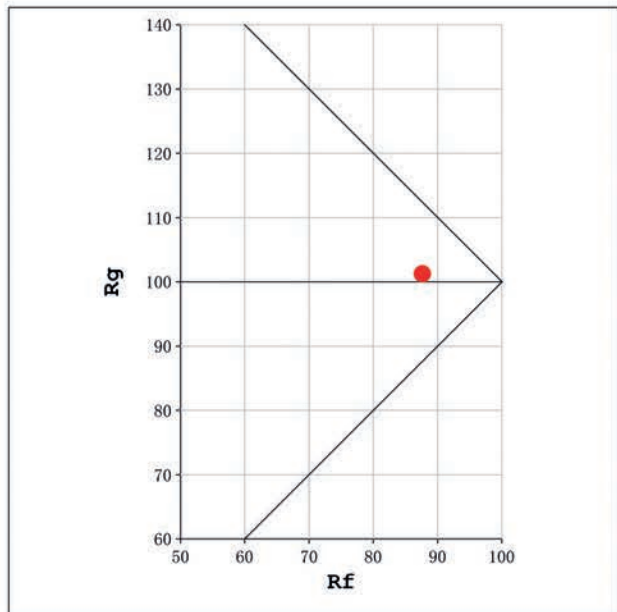
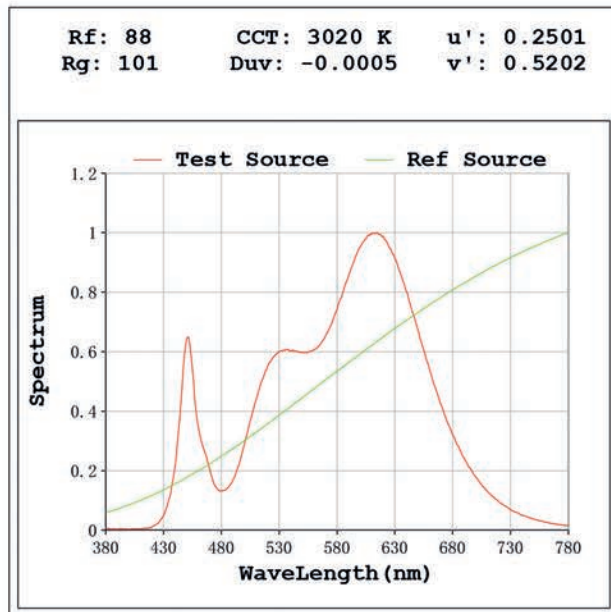
Electrical parameters:

V = 23.998 V I = 0.4659 A P = 11.18 W PF = 1.000

Status: Integral T = 1031 ms Ip = 50282 (77%)

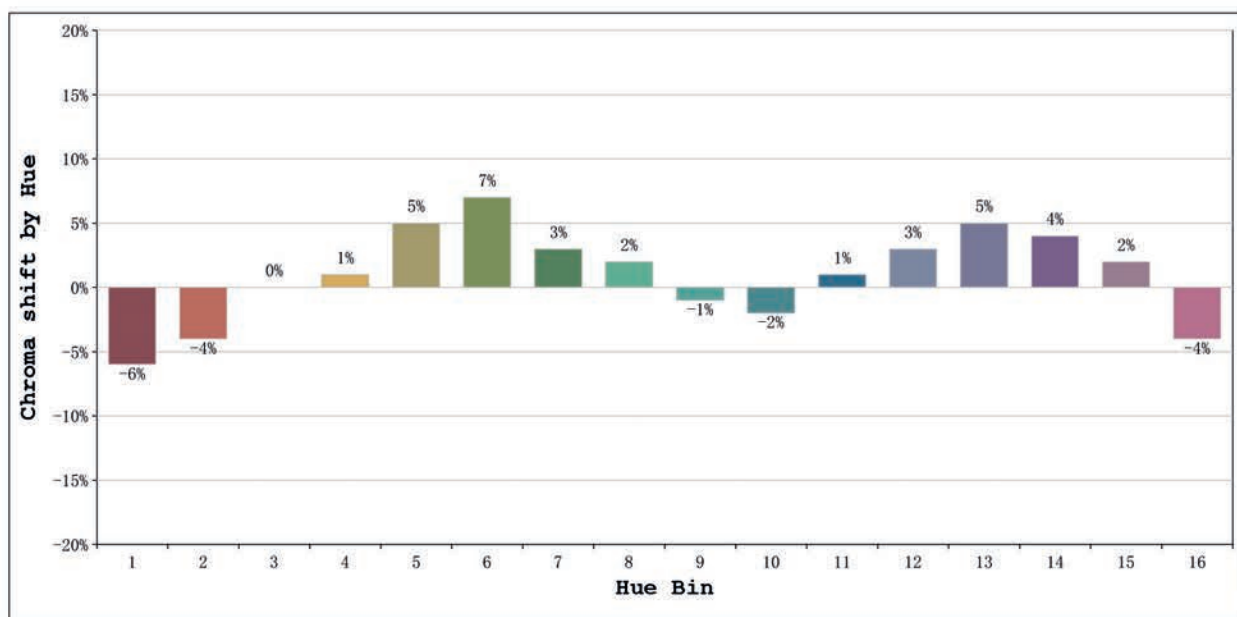
Model:Ecoled COB Roll to roll
 Tester:Sergio Carneros
 Temperature:20Deg
 Manufacturer:Luz Negra

Number: 31.240
 Date:2025-06-17 08:24:29
 Humidity:50%
 Remarks:100cm de tira flexible



Model:Ecoled COB Roll to roll
 Tester:Sergio Carneros
 Temperature:20Deg
 Manufacturer:Luz Negra

Number: 31.240
 Date:2025-06-17 08:24:29
 Humidity:50%
 Remarks:100cm de tira flexible



			Graphic shift(%)	
Hue Bin	Hue Angle	Rf	Chroma	Hue
1	0.0° - 22.5°	85	-6	0
2	22.5° - 45.0°	88	-4	4
3	45.0° - 67.5°	84	0	7
4	67.5° - 90.0°	91	1	4
5	90.0° - 112.5°	91	5	4
6	112.5° - 135.0°	88	7	1
7	135.0° - 157.5°	87	3	-5
8	157.5° - 180.0°	90	2	-4
9	180.0° - 202.5°	93	-1	-2
10	202.5° - 225.0°	92	-2	2
11	225.0° - 247.5°	89	1	6
12	247.5° - 270.0°	86	3	4
13	270.0° - 292.5°	87	5	-8
14	292.5° - 315.0°	78	4	-12
15	315.0° - 337.5°	87	2	-8
16	337.5° - 360.0°	79	-4	-10

Model:Ecoled COB Roll to roll
Tester:Sergio Carneros
Temperature:20Deg
Manufacturer:Luz Negra

Number: 31.240
Date:2025-06-17 08:24:29
Humidity:50%
Remarks:100cm de tira flexible